

“Problems”,

from

New York City,

from

KAYLA GUTHRIE,

2008,

to:

Larry's Canadian Fine Art  
for

*Creative Energy*

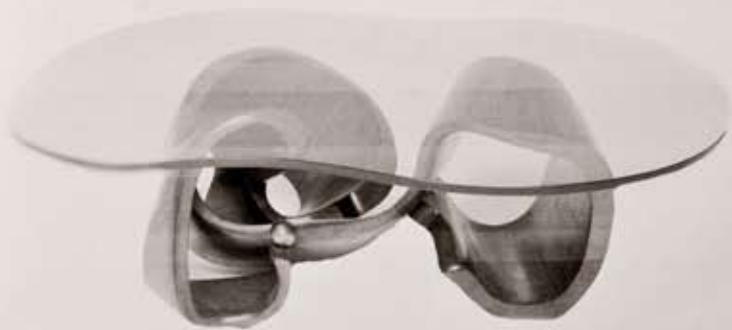
and

The Zanech Zane Fair



Problems    Kayla Guthrie

*Erwine and Estelle LaVerne met at the Art Students' League in 1934, just a few years after Erwine won a gold medal for faux-marble painting at the 1929 International Exposition in Brussels.*

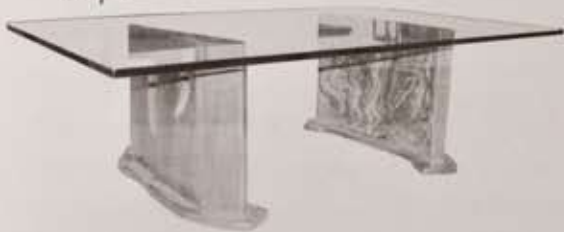


*You're  
confused,  
which happens a lot,  
so you retreat toward univer-  
sal indicators of quality like skilled  
workmanship and expensive materials. A  
nearly six-foot-long Chin Ying coffee table of 1972  
was especially notable for its rich range of colors re-  
sulting from smelted cloisonne set into pewter and bronze.  
Such cabinets now sell at auction for \$45,000 to \$100,000, usu-  
ally depending on the subtleties of coloration and design. Another  
thing is, she's too oriented toward moderate thinking. She thinks it's  
good for her health, but it's blocking the vision she needs to know where  
she really is. They are observant about everyday, personal things.*

The

*LaVeres* were

also inspired by Etruscan, Renaissance, eighteenth-century French, and abstract modern styles. How to not be seduced by being so right, and saying it so beautifully? An ornate design with a theme from the *The Odyssey* was commissioned by Aristotle Onassis, the Greek shipping magnate, and was elaborated with astrological signs from his own horoscope.

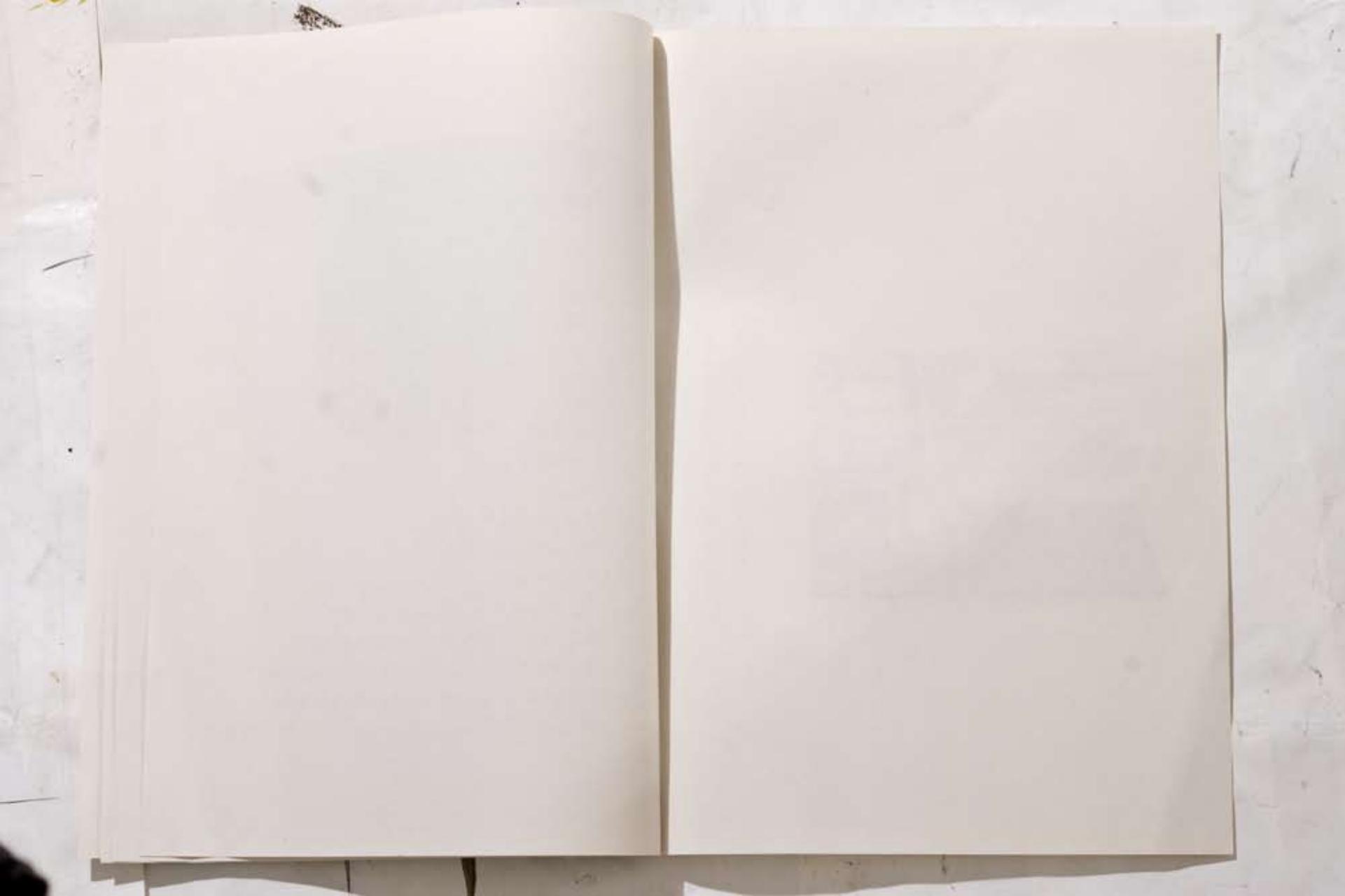


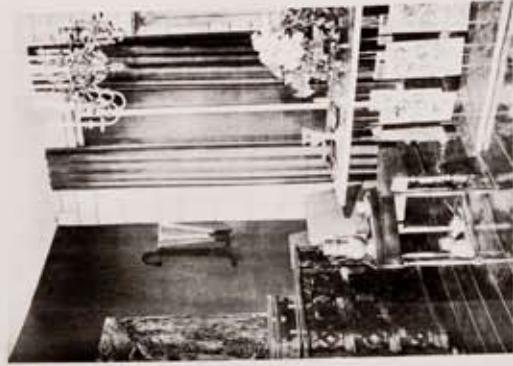


This material is too accessible to too many people.

This is not the area that we are working in here.

*Philip LaVerne, in collaboration with his son Kelvin, established a reputation in the rarefied field of custom-furniture making, or as Philip described it, 'functional art'. What can he do? He has to go on even though what he's trying to do is still not working.*





November / December 2008

<http://www.kaylaguthrie.com>

[kaylaguthrie@gmail.com](mailto:kaylaguthrie@gmail.com)